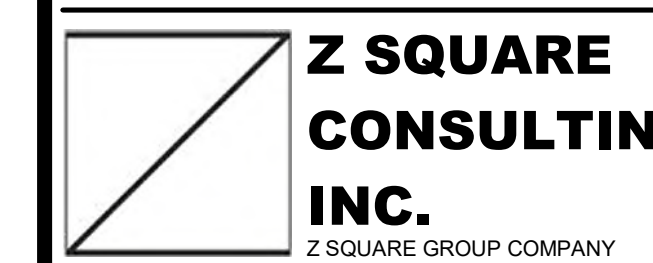
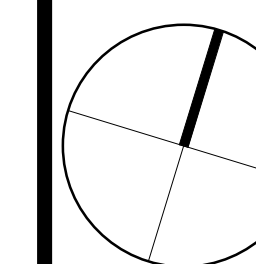
[illegible]

ISSUE RECORD



WWW.ZSQUAREGROUP.COM
T: 416-502-1616
E: INFO@ZSQUARECONSULTING.COM

GR Paradise Phase 2
COMMERCIAL CORE
for
GR GROUP

23010 1 : 3000
PROJECT SCALE

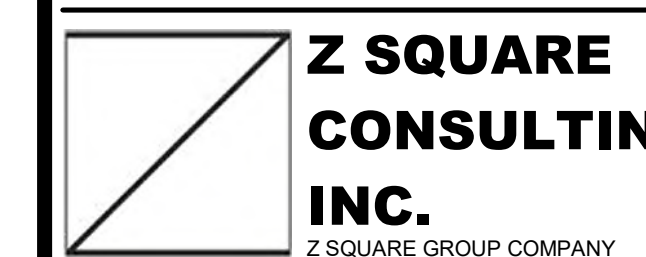
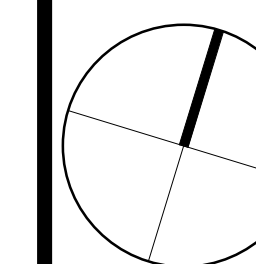
Shadow Study - March

A501

Note: This drawing is the property of the Architect and may not be reproduced or used without the expressed consent of the Architect. The Contractor is responsible for checking and verifying all levels and dimensions and shall report all discrepancies to the Architect and obtain clarification prior to reworking work.

[illegible]

ISSUE RECORD



WWW.ZSQUAREGROUP.COM
T: 416-502-1616
E: INFO@ZSQUARECONSULTING.COM

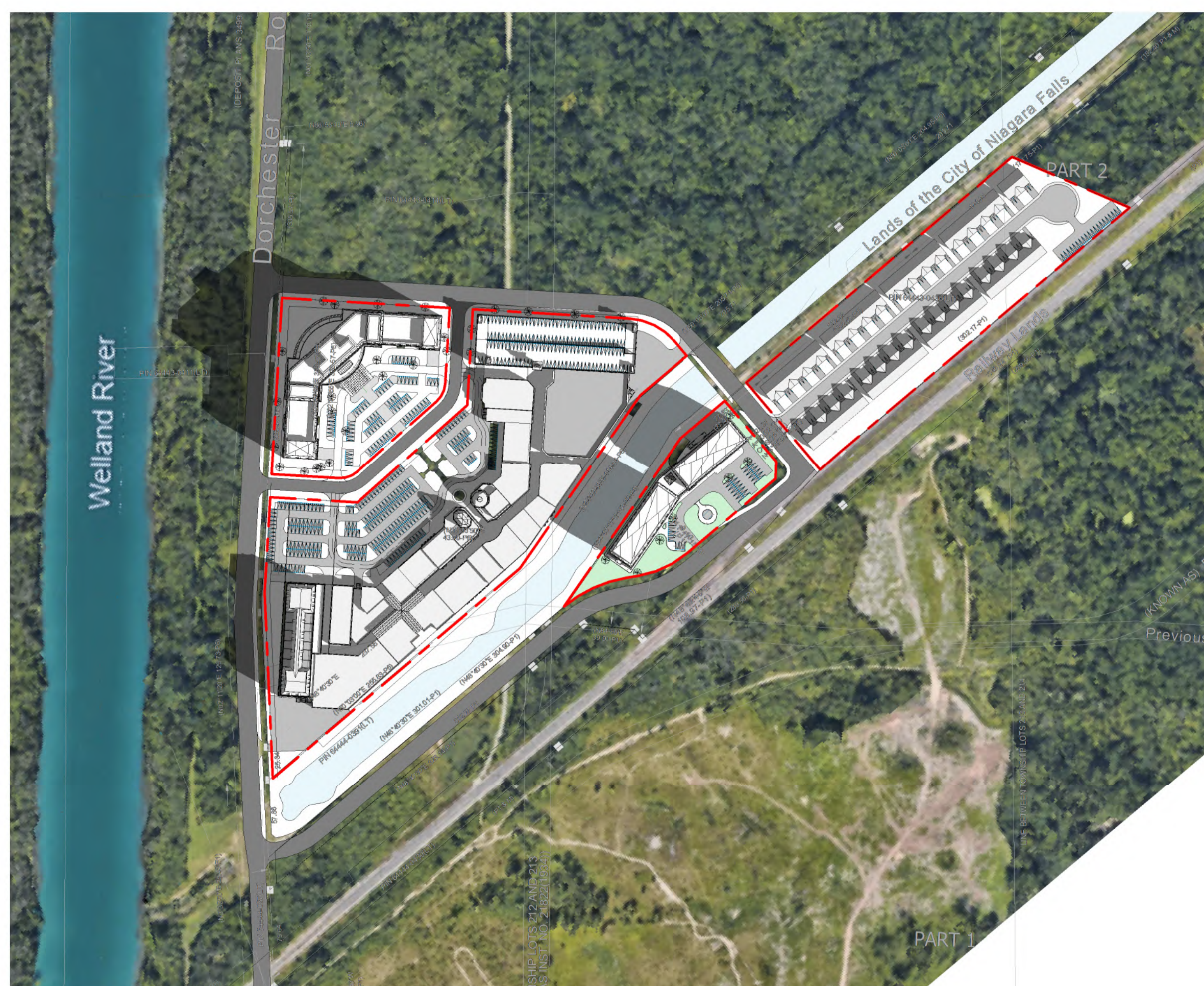
GR Paradise Phase 2
COMMERCIAL CORE
for
GR GROUP

23010 1 : 3000 AuthorChecked
PROJECT SCALE DRAWN REVIEW

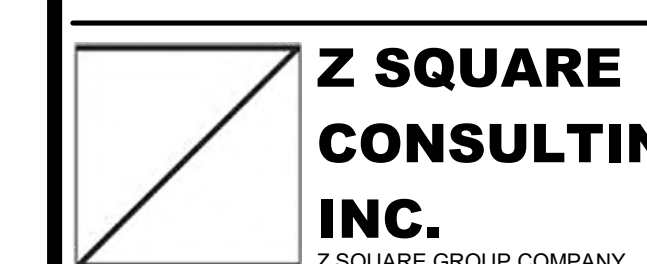
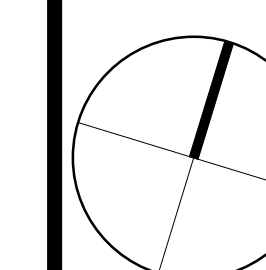
Shadow Study - June

A502

Note: This drawing is the property of the Architect and may not be reproduced without the expressed consent of the Architect. The Contractor is responsible for checking and verifying all levels and dimensions and shall report all discrepancies to the Architect and obtain clarification prior to construction.

[illegible]

ISSUE RECORD



WWW.ZSQUAREGROUP.COM
T: 416-502-1616

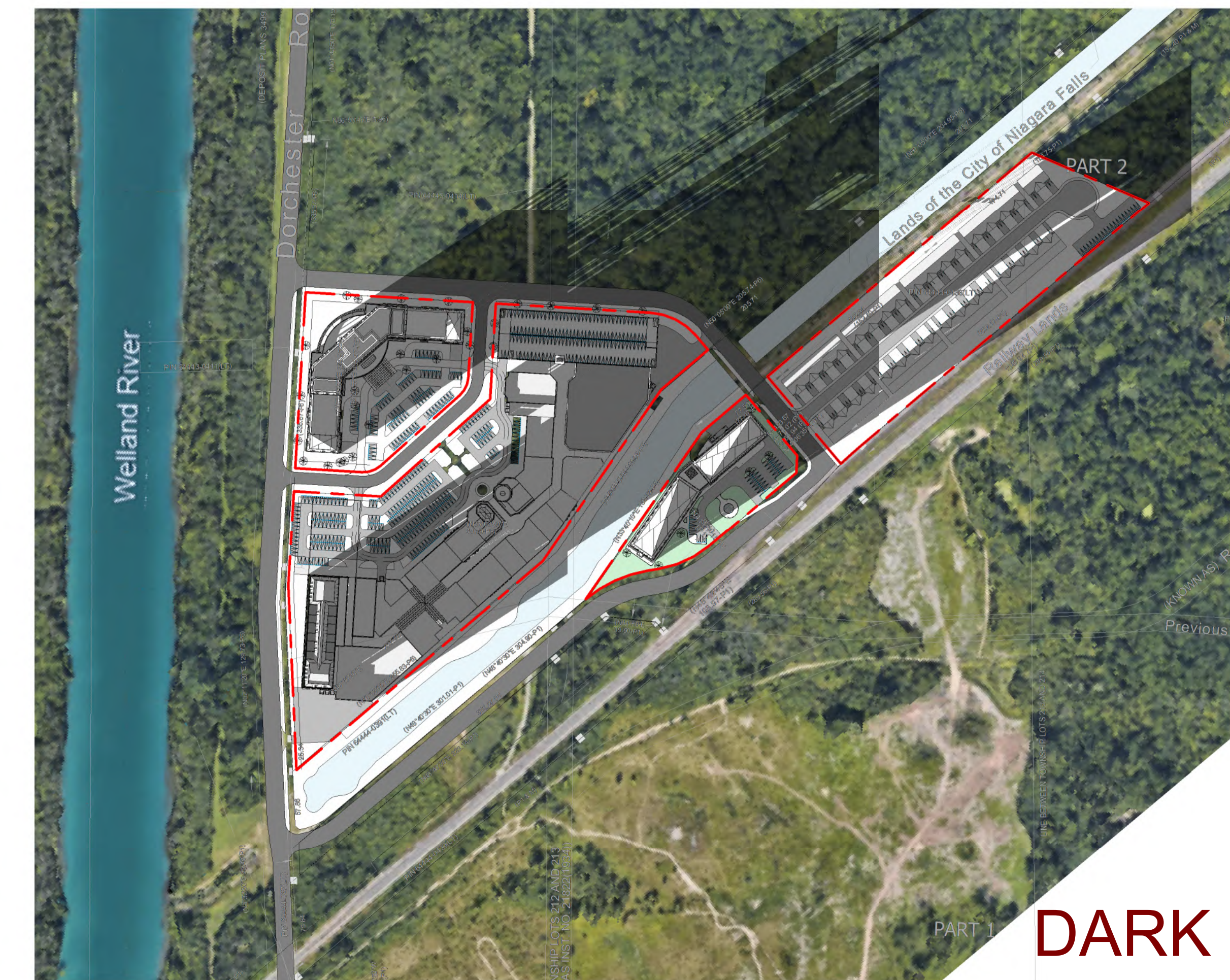
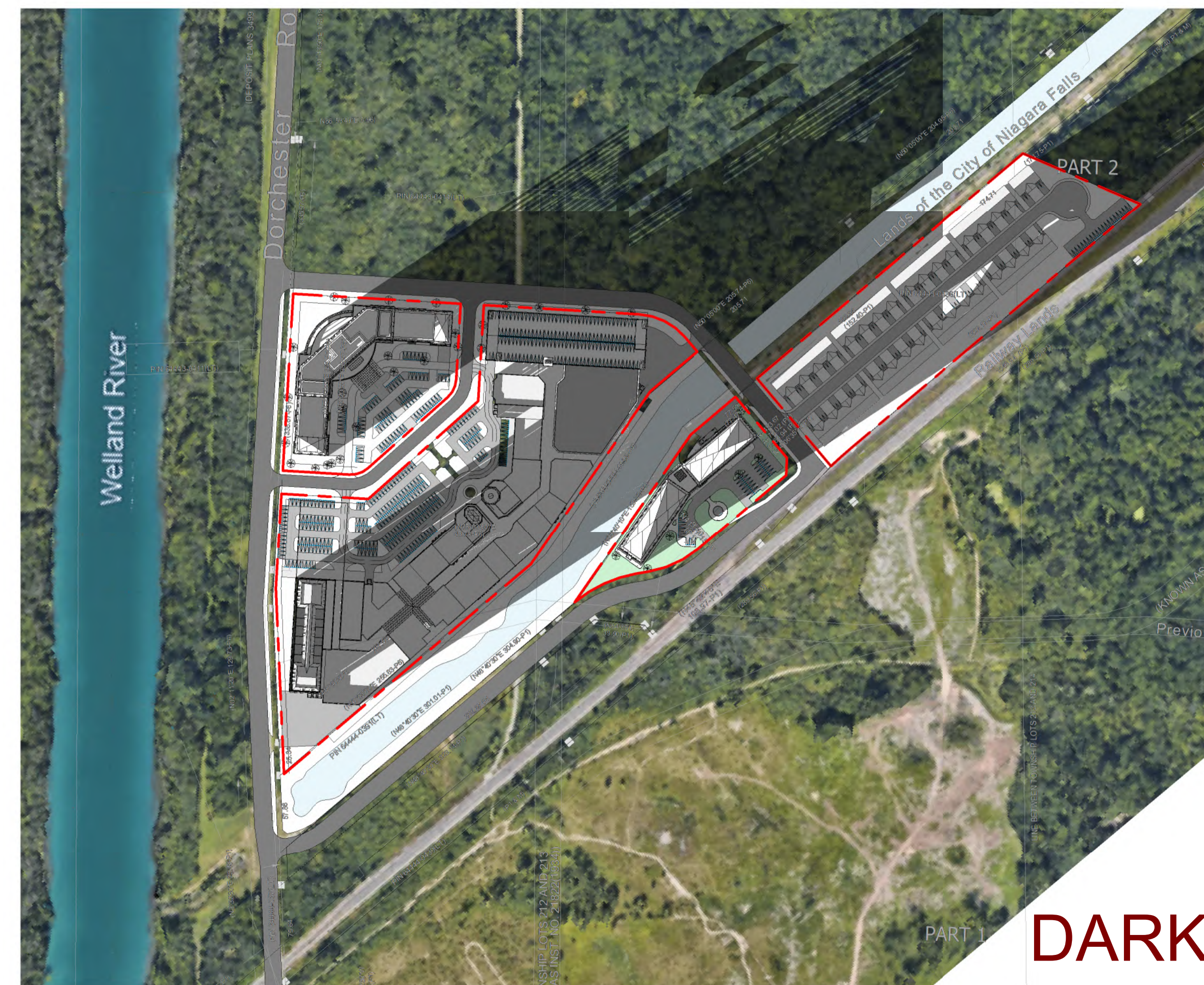
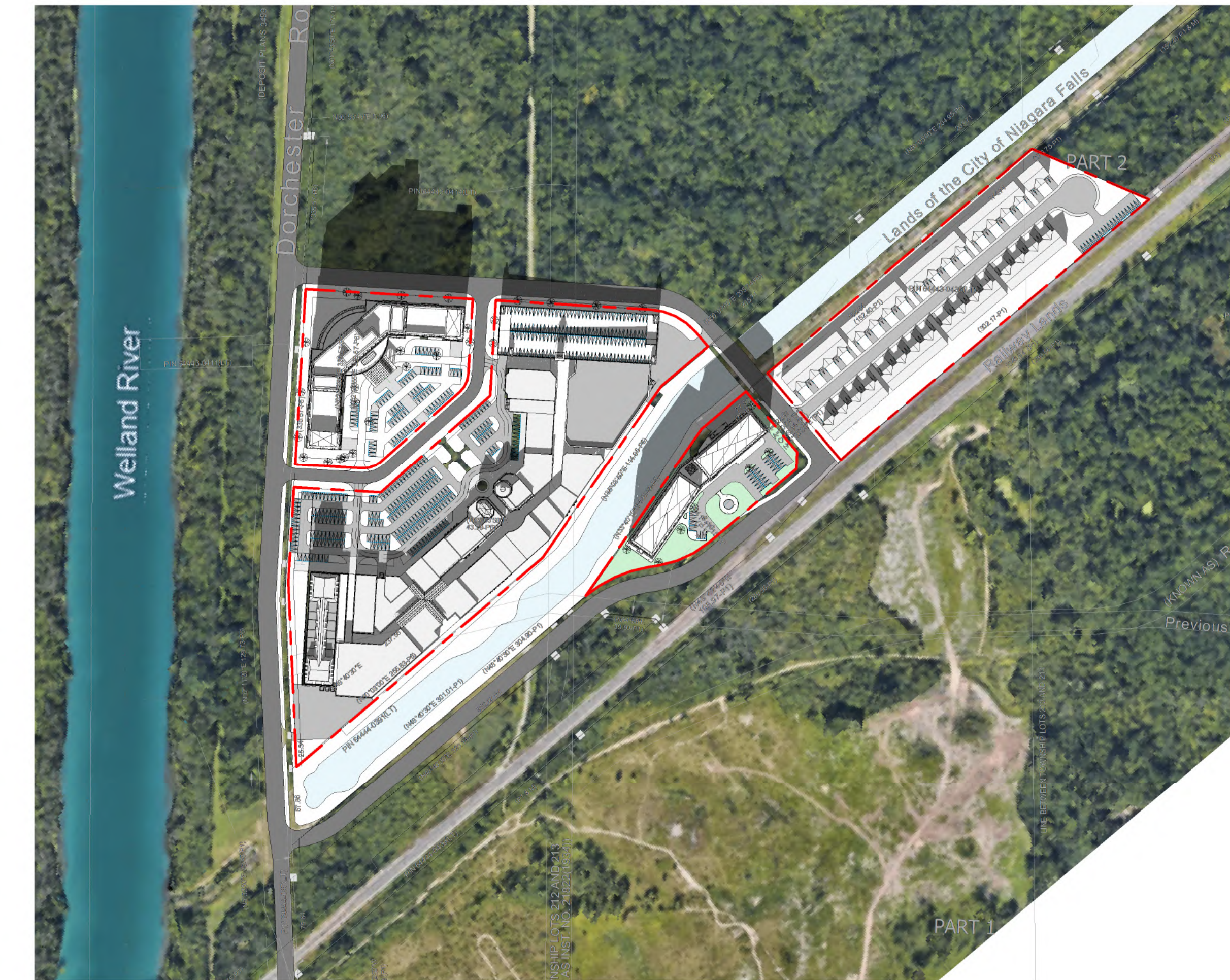
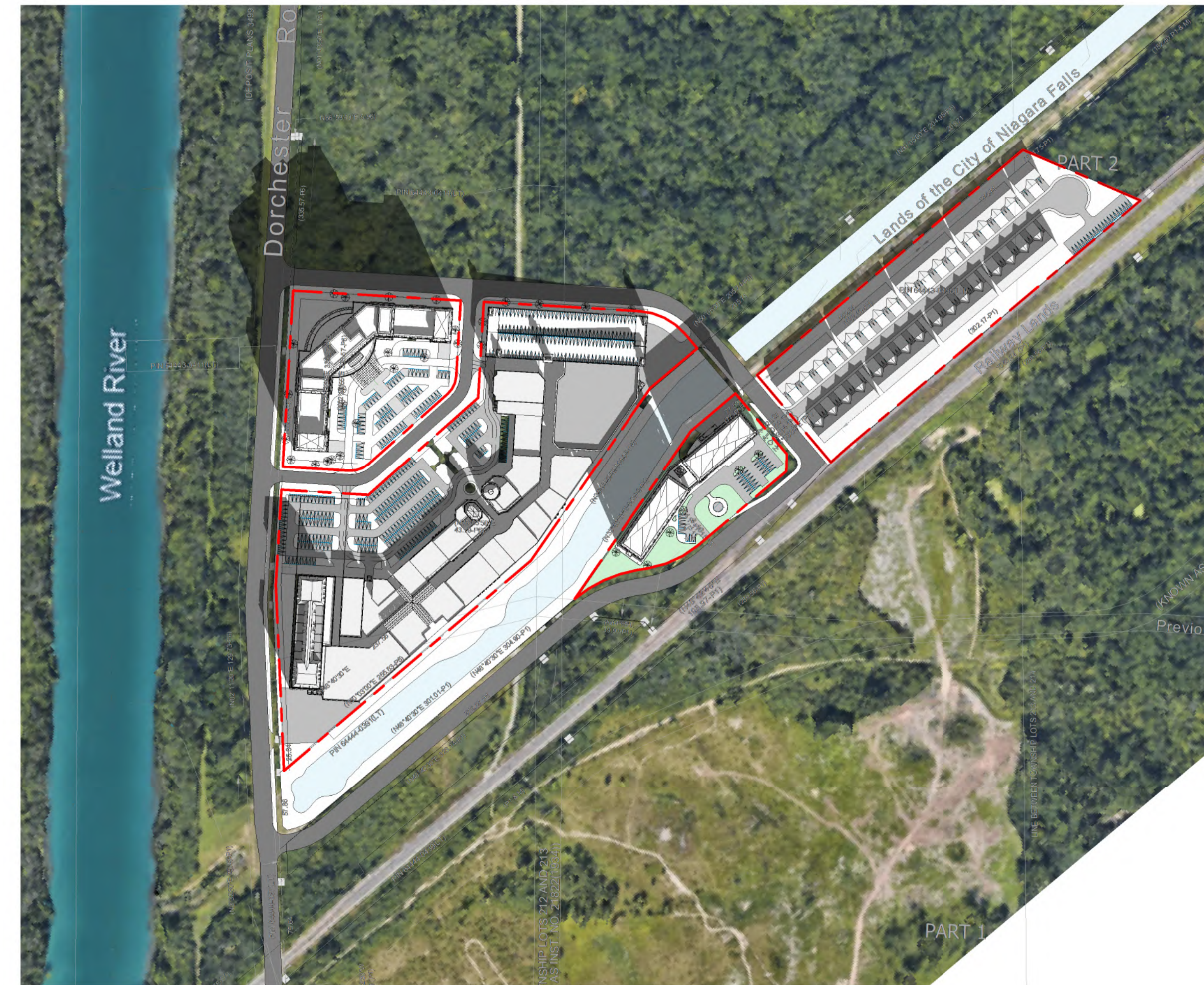
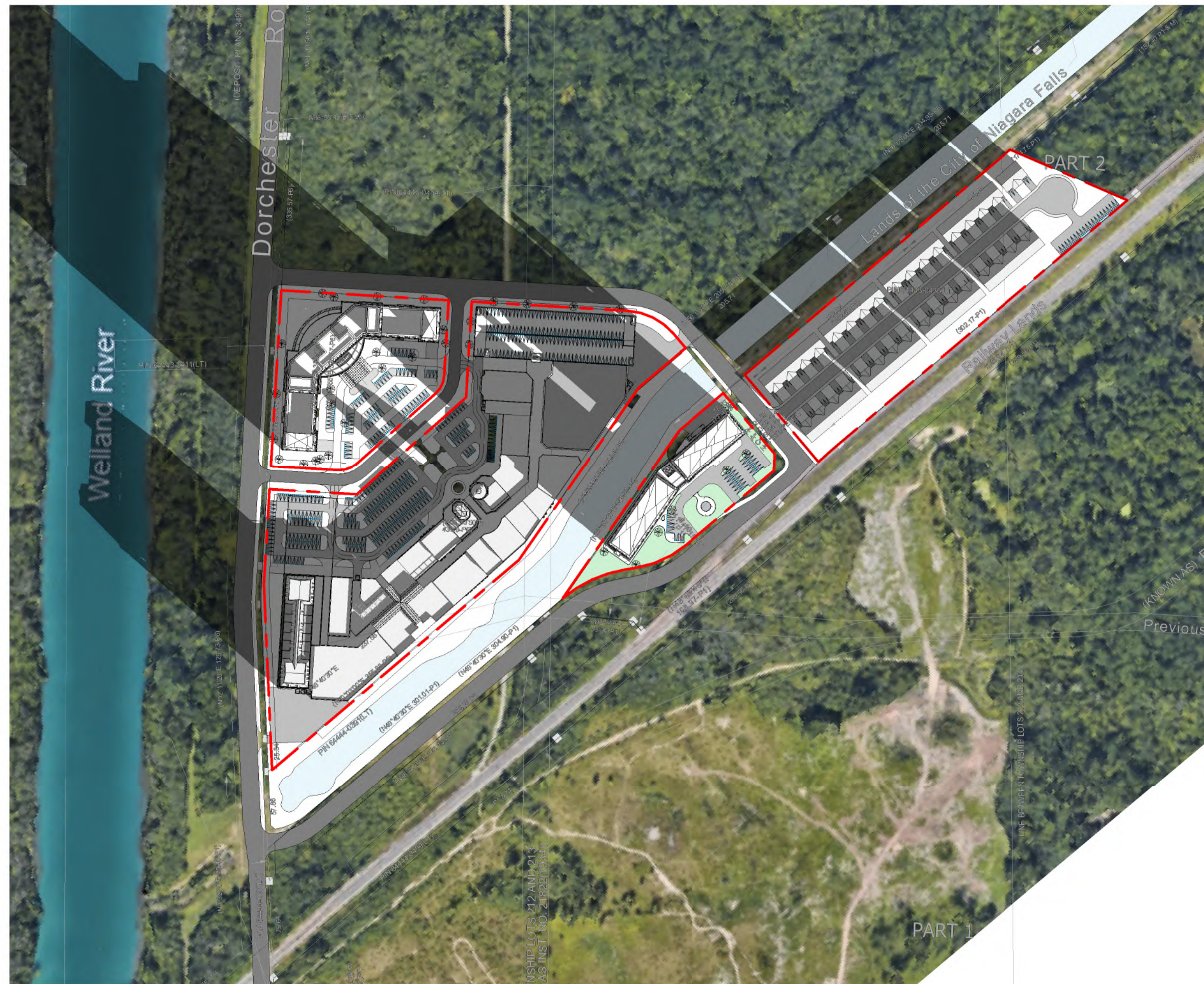
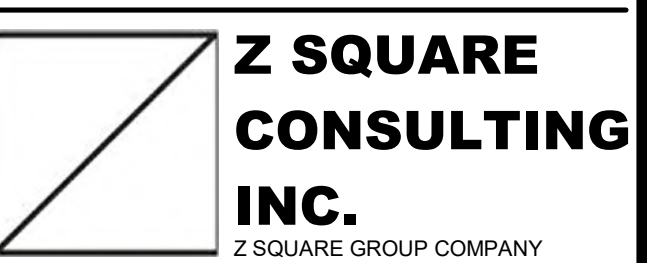
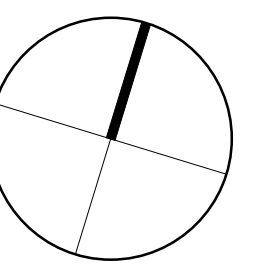
GR Paradise Phase 2
COMMERCIAL CORE
for
GR GROUP

23010 1 : 3000 AuthorChe
PROJECT SCALE DRAWN REVIEW

Shadow Study - September

A503

Note: This drawing is the property of the Architect and may not be reproduced without the expressed consent of the Architect. The Contractor is responsible for checking and verifying all levels and dimensions and shall report all discrepancies to the Architect prior to obtaining final approval for construction.

[illegible]ISSUE RECORD

WWW.ZSQUAREGROUP.COM
T: 416-502-1616
E: INFO@ZSQUARECONSULTING.COM

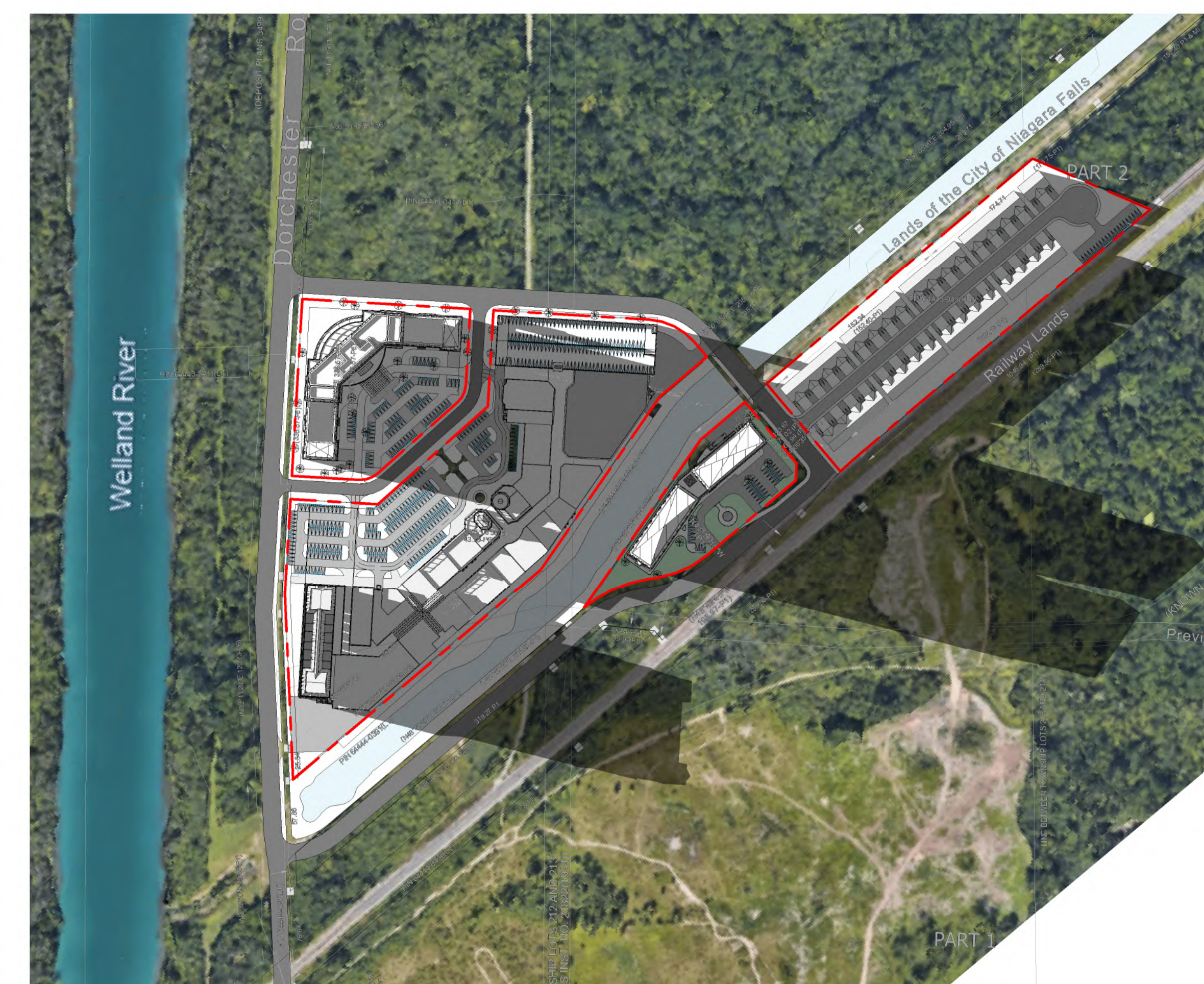
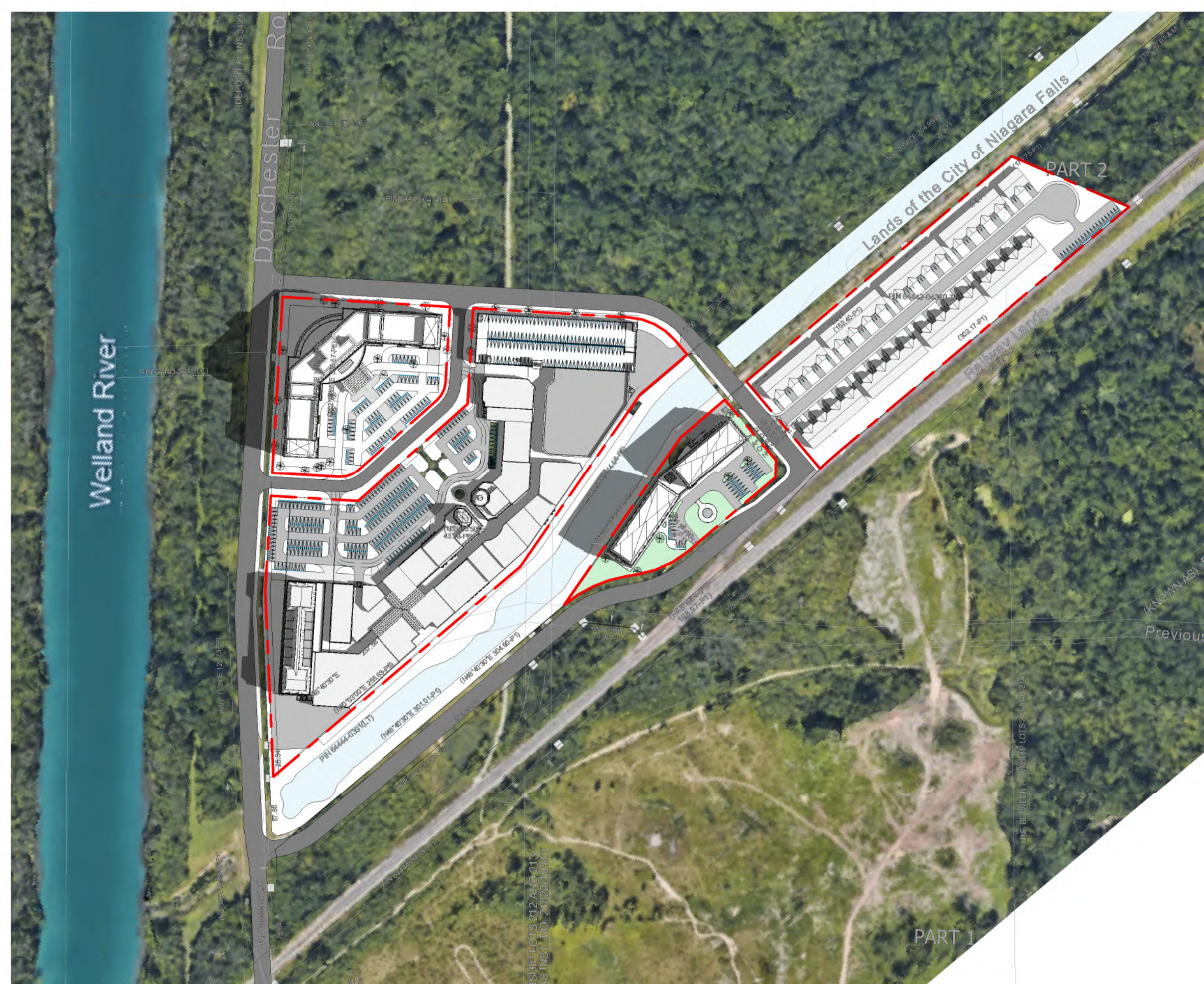
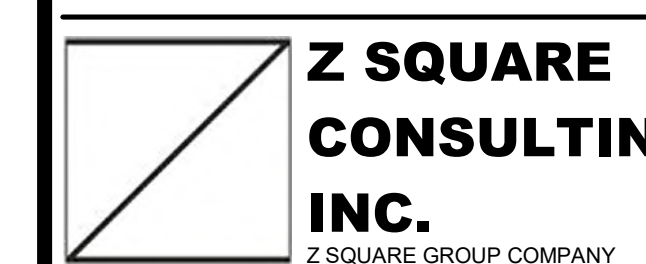
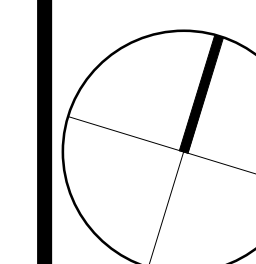
GR Paradise Phase 2
COMMERCIAL CORE
for
GR GROUP

23010 1 : 3000 AuthorChecked
PROJECT SCALE DRAWN REVIEWED

Shadow Study - December

A504

note: This drawing is the property of the Architect and may not be reproduced or used without the expressed consent of the Architect. The Contractor is responsible for checking and verifying all levels and dimensions and shall report all discrepancies to the Architect and obtain clarification prior to commencing work.

[illegible]ISSUE RECORD

WWW.ZSQUAREGROUP.COM
T: 416-502-1616
E: INFO@ZSQUARECONSULTING.COM

GR Paradise Phase 2
COMMERCIAL CORE
for
GR GROUP

23010 1 : 3000 AuthorChecked
PROJECT SCALE DRAWN REVIEW

Shadow Study - April

A505

Note: This drawing is the property of the Architect and may not be reproduced without the expressed consent of the Architect. The Contractor is responsible for checking and verifying all levels and dimensions and shall report all discrepancies to the Architect and obtain clarification prior to construction.

Users\ZENG\Documents\Main_20231127_nzong25KPS.M
